

A ROGUES' GALLERY: TRAIN ROBBERS INVESTIGATED BY
THE POSTAL INSPECTION SERVICE

Frank R. Scheer

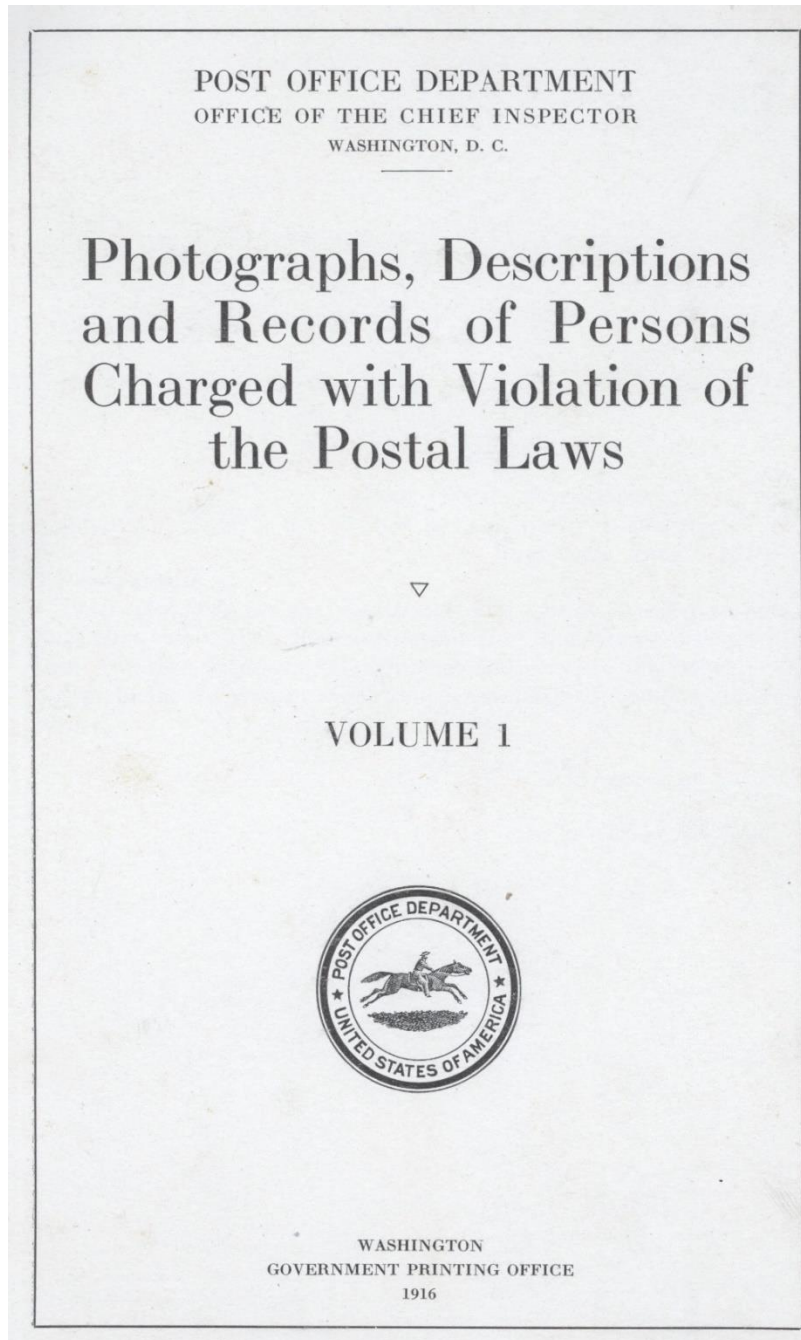


Figure 1 - Title page, volume 1 of the Post Office Department Inspection Service reference book of known postal criminals, 1916.

The Inspection Service published a two-volume set of “Photographs, Descriptions and Records of Persons Charged with the Violation of the Postal Laws” during 1916. This was limited printing and restricted for use by Postal Inspectors. It is unknown whether similar volumes were printed before or after 1916.

This pair of books was provided to the Railway Mail Service Library by Randall W. Stewart, retired Postal Inspector. Of interest are the pages that pertain to mail train robbers. Many other criminals are identified in the books such as burglars and mail pouch thieves. Some of these people were also involved with Railway Post Office (RPO) hold-ups but those pages have not been searched.

The Volume 1 individuals have the page number at the top of their entry. Volume 2 continues, with its own page numbers at the top. These should be used for primary source citations.

1916 precedes two spectacular mail train robberies. The first was the DeAutremont brothers of the ASHLAND & SAN FRANCISCO RPO, Train 13 at Southern Pacific Tunnel 13, on October 11th, 1923. The second was the CHICAGO & MINNEAPOLIS RPO. Milwaukee Road train 57 –an exclusive mail train without passengers —on June 12th, 1924. The perpetrators are described in other articles, both of which resulted in large manhunts.

As a result of these recurring robberies but particularly of the last two during 1923 and 1924, Railway Postal Clerks were issued revolvers. U. S. Marines were also assigned to RPOs for a short stint.

Each of the entries can be researched further regarding train schedules or contemporary newspaper accounts. Anyone pursuing this information is encouraged to prepare an article; the Railway Mail Service Library welcomes a copy for its reference collection.



Figure 2 - Chief Inspector badge circa 1916. Other badges only had "INSPECTOR" at the bottom.

MAIL TRAIN ROBBER.



CHARLES JOHNSON HARRISON.

Aliases "Jeff" Harrison, Sam J. Smith, John Harrison, C. J. Harrison.

Description.—Age, about 51; height, 5 feet 8 or 9 inches; weight, 142; hair, chestnut gray; eyes, chestnut.

Peculiar marks.—I. Little finger amp. 1st jt. II. 2 vert. cut scs. back of hand. III. Cut sc. across nose; burn scar under r. jaw; cut sc. r. side of neck; sc. at upr. lobe l. ear.

Bertillon.—73.3; 78.0; 69.6; 20.3; 15.2; 13.9; 6.8; 25.0; 11.3; . . . 46.6.

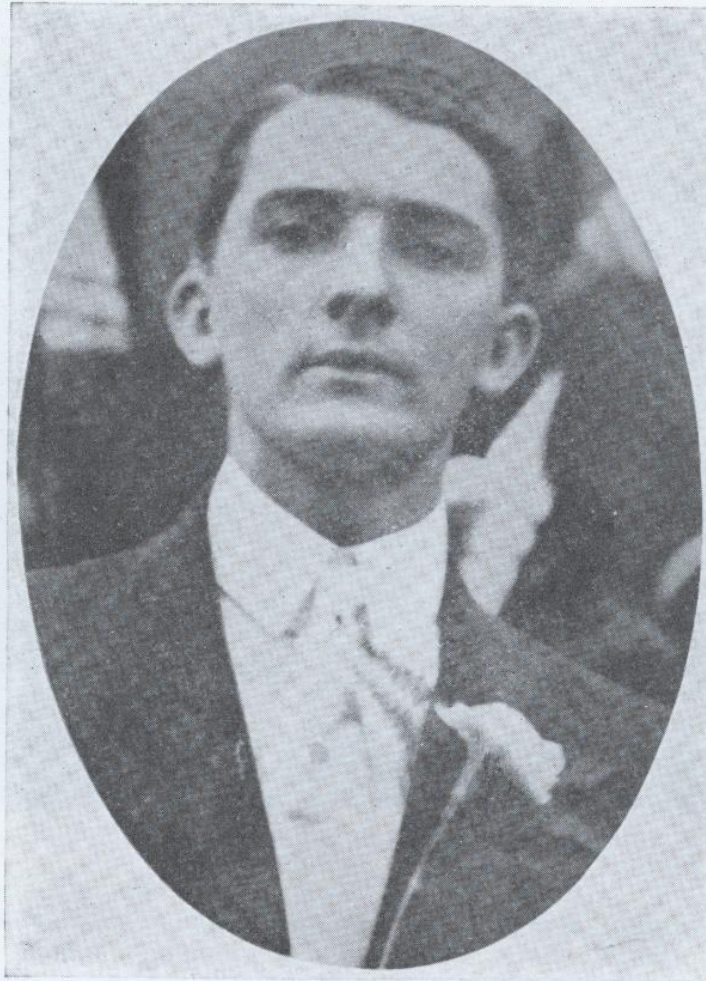
Indicted May 4, 1916, Wheeling, W. Va., charged with robbery of Grafton & Cincinnati R. P. O. train 1 at Central Station, W. Va., October 8, 1915, and the theft of 90 registered packages containing unsigned national bank notes.

Arrested January 22, 1916, San Antonio, Tex. Case will be called for trial at Elkins, W. Va., first Tuesday in July, 1916.

Previous record.—Harrison was sentenced at Birmingham, Ala., April 3, 1893, to be imprisoned for the term of his life in the penitentiary at Anamosa, Iowa, for the holdup and robbery of a postal clerk on a mail train of the east Tennessee, Virginia & Georgia Railway at Piedmont Tank, Ala., October 31, 1892. It appears that he was released from the above-named penitentiary in 1900. History 29670.

Figure 3 - Charles Johnson Harrison; robbed the SELMA & YORK STATION RPO – 1893, and the GRAFTON & CINCINNATI RPO – 1915.

MAIL TRAIN ROBBER.



H. GRADY WEBB.

Aliases: R. A. Burns, R. A. Moore, R. D. Burton.

Description.—Age, about 33; height, 5 feet 9 or 10 inches; weight, 190 to 200 pounds; dark hair; small eyes; smooth, full face; ruddy complexion.

Peculiar marks.—Tattoo marks on arms. Ridge extending full length of thumb nail on left hand. Third finger on left hand is stiff and somewhat crooked.

Indicted May 4, 1916, Wheeling, W. Va., charged with the robbery of Grafton & Cincinnati R. P. O. train 1, Central Station, W. Va., October 8, 1915, and the theft of 90 registered packages containing unsigned national-bank notes. Fugitive from justice. History 29670.

Figure 4 - H. Grady Webb; robbed the GRAFTON & CINCINNATI RPO - 1915.

MAIL TRAIN ROBBER.



JEAN LA BANTA.

Aliases: Clyde Kaufman, R. Manning, J. C. Donnelly, R. Gordon, H. Gordon, F. C. Norris.

Description.—Age, about 35; height, 5 feet 10 inches; weight, 152; medium dark complexion; dark chestnut hair.

Bertillon.—77.7; 87.0; 92.5; 18.9; 15.1; 13.7; 6.0; 26.4; 12.3; 9.9; 50.0.

Sentenced February 11, 1914, San Francisco, Cal., to serve 25 years in State penitentiary, San Quentin, Cal., charged with the robbery of San Francisco, San Jose & Los Angeles R. P. O. train 23, October 14, 1913, between Burlingame and San Francisco, Cal.; and train 77, same R. P. O. November 17, 1913, between San Jose and San Francisco, Cal., and in effecting both robberies placing the lives of clerks in jeopardy by the use of a dangerous weapon.

Indictment returned at Los Angeles, Cal., February 10, 1914, for robbery of San Francisco, San Jose & Los Angeles R. P. O. train 9, at Los Angeles, Cal., January 10, 1914, pending.

Previous record.—Received at San Quentin, Cal., penitentiary, April 16, 1911, from San Benito County, Cal., to serve 2 years for grand larceny. It is also reported that La Banta is wanted in several counties in the State of California for passing fictitious checks. History 24817.

Figure 5 - Jean La Banta; robbed the SAN FRANCISCO, SAN JOSE & LOS ANGELES RPO, 1913.

MAIL TRAIN ROBBER.



J. P. BARRY.

Alias: J. W. Burke.

Description.—Age, about 30; height, 5 feet 6 $\frac{3}{8}$ inches; weight, 156; medium build; dark complexion; black hair; blue eyes.

Bertillon.—68.8; 72.0; 92.3; 19.0; 15.0;; 6.0; 25.2; 11.3; 8.3; 45.6.

Sentenced March 6, 1914, Los Angeles, Cal., to serve 5 years in State penitentiary, San Quentin, Cal., charged with having assisted in the holdup and robbery of San Francisco, San Jose & Los Angeles R. P. O. train 9, at Los Angeles, Cal., January 10, 1914.

Previous record.—Barry is reported to have served a term in the State penitentiary, San Quentin, Cal., for forgery. History 24817.

Figure 6 - J. P. Barry; robbed the SAN FRANCISCO, SAN JOSE & LOS ANGELES RPO, 1913.

MAIL TRAIN ROBBER.



FRANK PRICE.

Alias: Frank Day.

Description.—Age, about 46; weight, 155; dark complexion.

Peculiar marks.—II. 6 scars averaging $\frac{1}{2}$ " dia. on r. forearm, rear. III. Scar of 2" obl. to l. on r. of m. line edge of scalp, running down on forehead.

Bertillon.—63.5; 61.0; 88.5; 19.4; 15.8; 14.5; 6.5; 24.3; 11.1; 8.4; 43.5.

Sentenced January 31, 1913, Muskogee, Okla., to serve a term of 25 years in United States penitentiary, Leavenworth, Kans., charged with the holdup and robbery of Memphis & McAlester R. P. O. train 41, between Howe and Wister, Okla., October 8, 1912. Price appealed case to United States court of appeals, which was argued before that court at St. Paul, Minn., May 5, 1914; and on November 9, 1914, rendered a decision affirming the conviction and verdict.

Price is reported to have served a term in the United States penitentiary at Leavenworth, Kans., for post-office burglary, also a term in the Missouri State penitentiary for burglary. History 21997.

Figure 7 - Frank Price; robbed the MEMPHIS & McALESTER RPO, 1912.

MAIL TRAIN ROBBER.



ROBERT MATHIES.

Alias: Bob Mathies.

Description.—Age, about 26; height, 5 feet 9½ inches; weight, 142; medium build; medium fair complexion; light-brown hair; blue eyes.

Peculiar marks.—Cut sc. 1" long 3" above left elbow inner. 2nd left lower jaw tooth missing.

Bertillon.—76.6; 75.0; 91.9; 19.3; 15.1; 13.6; 6.1; 25.1; 11.0; 8.5; 46.0.

Sentenced October 18, 1913, Ardmore, Okla., to serve term of 25 years in United States penitentiary, Leavenworth, Kans., charged with robbery of the Memphis & McAlester R. P. O. train 41, between Howe and Wister, Okla., October 8, 1912. History 21997.

Figure 8 - Robert Mathies; robbed the MEMPHIS & McALESTER RPO, 1912.

MAIL TRAIN ROBBER.



MARSHALL MOON.

Alias: Hudson M. Moon.

Description.—Age, about 28; height, 5 feet 9 inches; weight, 114; slender build; sallow complexion; medium chestnut hair; eyes, blue, var.

Peculiar marks.—L. arm: Scar ind. of 1.8 vert. at wrist, front. Sc. of 1 vert. at 2d jt. index, rear. Face: Blue scar of 1 obl. sli. outward at 15 above inner r. eyebrow. Sc. ind. of 1.5 vert. at 2 above inner r. eyebrow. Small mole at r. side of pt. of nose. Small mole at r. wing. Eyebrows united.

Bertillon.—75.5; 82.0; 92.0; 19.2; 15.4; 14.0; 6.5; 27.0; 11.6; 9.3; 47.7.

Sentenced May 7, 1914, Anniston, Ala., to serve 25 years in the United States penitentiary, Atlanta, Ga., for holding up and robbing clerks in postal car attached to train 12, Atlanta & Birmingham R. P. O., January 19, 1913, between Riverside and Lincoln, Ala. History 22483.

Figure 9 - Marshall Moon; robbed the ATLANTA & BIRMINGHAM RPO, 1913.

MAIL TRAIN ROBBER.



[Above picture taken some years ago].

WILLIAM W. LOWE.

Alias: William J. Warren.

Description.—Age, about 48; height, 5 feet 5 $\frac{3}{4}$ inches; weight, 175; stout build; florid complexion; gray hair; gray eyes.

Peculiar marks.—Scar tip of r. index fing. Scar above Adams apple, front of neck.

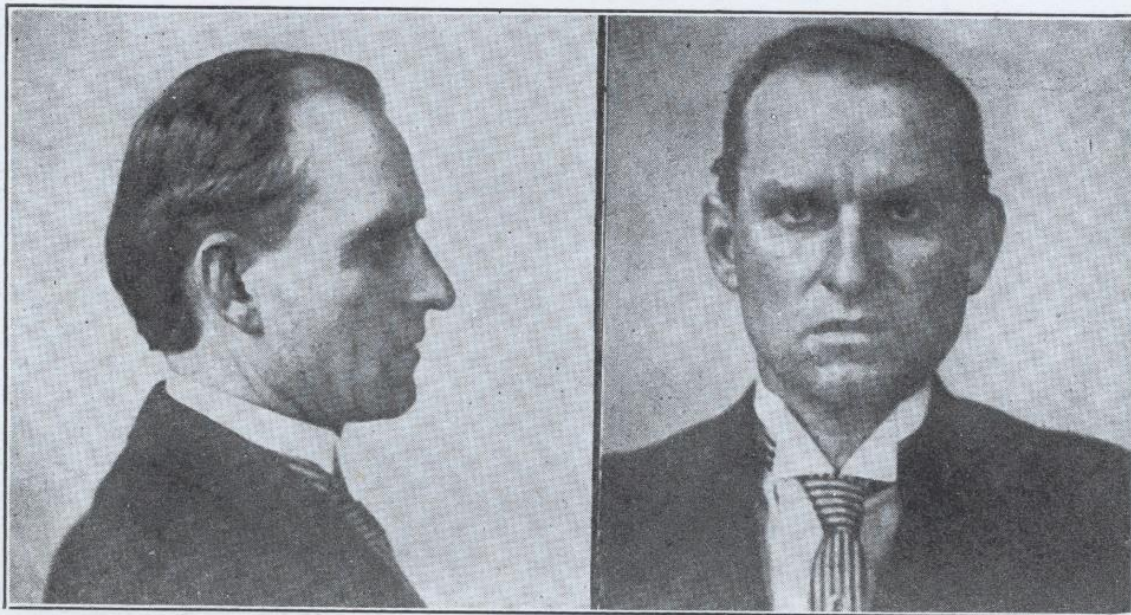
Bertillon.—64.3; 73.0; 92.1; 19.1; 15.9; 6.8; . . . ; 25.2; 11.5; 9.0; 45.6.

Sentenced May 19, 1910, to serve 43 years and pay fine of \$3,000, in the United States penitentiary, Leavenworth, Kans., charged with the theft of registered mail in connection with the holdup and robbery of Missouri Pacific train No. 8, near Glen-coe, Mo., January 21, 1910.

Indictment returned Spokane, Wash., September 21, 1910, for the holdup and robbery of Havre & Spokane R. P. O., train No. 3, Colbert, Wash., May 15, 1909, pending. History 16973.

Figure 10 - William W. Lowe; robbed the HAVRE & SPOKANE RPO, 1909.

MAIL TRAIN ROBBER.



[Above picture taken some years ago.]

GEORGE EBELING.

Alias: George Erber.

Description.—Age, about 41; height, 5 feet 10½ inches; weight, 166; medium stout build; sallow complexion; light-brown hair; blue eyes.

Peculiar marks.—Vac. sc. upper l. arm. Syphilitic scs. l. forearm. Scar “V” shaped 2d joint l. index. Four syphilitic scars r. forearm. Scar on r. buttock. Scar above l. buttock. Scar on both shins.

Bertillon.—75.9; 85.0; 95.2; 18.7; 15.4; 14.3; 6.6; 26.8; 11.8; 8.9; 48.2.

Sentenced May 20, 1910, St. Louis, Mo., to serve 15 years in United States penitentiary, Leavenworth, Kans., charged with the theft of registered mail in connection with the holdup and robbery of Missouri Pacific mail train No. 8, near Glencoe, Mo., January 21, 1910.

Indictment returned Spokane, Wash., September 21, 1910, for the holdup and robbery of Havre & Spokane R. P. O. train No. 3, Colbert, Wash., May 15, 1909, pending. History 16973.

46872—16—32

Figure 11 - George Ebeling; robbed the HAVRE & SPOKANE RPO, 1909, and the ST. LOUIS & KANSAS CITY RPO, 1910.

MAIL TRAIN ROBBER.



JAMES GORDON.

Aliases: Frank Grigware, E. E. Hollingshead.

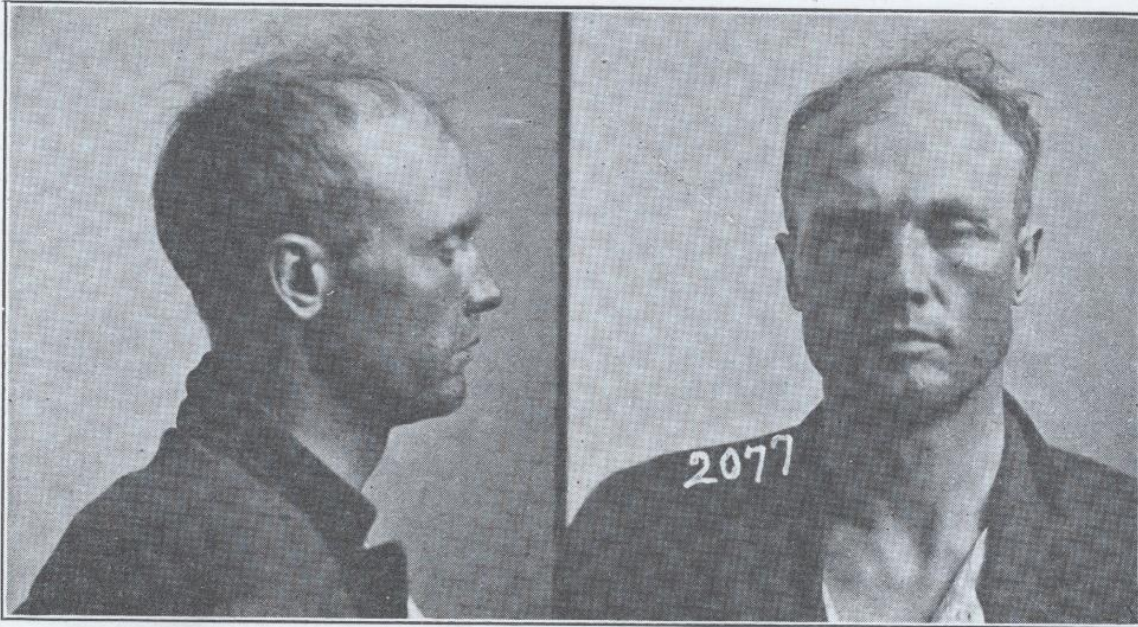
Description.—Age, about 31; height, 5 ft. 8½ inches; weight, 165; fair complexion; azure blue eyes; brown hair; nose twists slightly to right; 2nd and 3rd toes on both feet are partly grown together; scar on palm of left third finger; pit scar at ½ inch below right eye.

Bertillon.—74.8; 82.0; 93.5; 19.7; 16.4; 14.0; 6.4; 25.7; 11.5; 9.3; 47.8

Sentenced November 18, 1909, at Omaha, Nebr., to serve a life term in the Leavenworth, Kans., Penitentiary, for robbery of mail train on the Union Pacific Railway near Omaha, Nebr., May 22, 1909. Escaped from the penitentiary mentioned at 8 a. m., April 21, 1910. Has not been apprehended, and is a fugitive from justice. History, 15707.

Figure 12 - James Gordon; robbed what may have been the OMAHA & OGDEN RPO, 1909.

MAIL TRAIN ROBBER.



ALBERT J. LEWIS.

Aliases: Harry C. Lester, Charles Bishop, Charley Hudson, Harry Childs Lester.

Description.—Age, about 37; height, 6 feet $\frac{5}{8}$ inch; weight, 158; slender build; sallow complexion; teeth, 2 up. l. jaw gold; d. blond hair; pale blue eyes; small nose; med. chin; slim face.

Peculiar marks.—I. Obl. cut scar 1st phal. index finger post exp. Small cut scar 1st phal. mid. finger post. II. Large irreg. scar on forearm post. Large irreg. scar on forearm ant. III. Small cut scar above right eyebrow; scar under outer point right eyebrow. Left eyebrow and cheekbone bruised.

Bertillon.—84.5; 92.0; 94.5; 20.1; 15.7; 14.3; 5.7; 27.2; 12.5; 9.4; 51.9

Sentenced December 31, 1908, at Fargo, N. Dak., to pay a fine of \$5,000 and to serve a term of two years in the United States penitentiary, Leavenworth, Kans., for attempting to rob a railway mail train, near Lucca, N. Dak., October 9, 1908.

Arrested April 24, 1915, at New Orleans, La., for holdup of Louisville & Nashville Railway train (Montgomery & New Orleans R. P. O.) No. 1, near Bay St. Louis, Miss., April 23, 1915, in which the express safe was reported to have been blown and the baggage master killed. Lewis was sentenced by the State authorities at Bay St. Louis, Miss., October 26, 1915, to life imprisonment in the State penitentiary, at Jackson, Miss. He escaped May 20, 1916, from the Rankin County, Miss., penal farm, and is apparently still at large. Histories 14448 and 29228.

Figure 13 - Albert J. Lewis; robbed the ST. PAUL & PORTAL RPO, 1908, and the MONTGOMERY & NEW ORLEANS RPO, 1915.

POST OFFICE DEPARTMENT
OFFICE OF THE CHIEF INSPECTOR
WASHINGTON, D. C.

Photographs, Descriptions and Records of Persons Charged with Violation of the Postal Laws



VOLUME 2



WASHINGTON
GOVERNMENT PRINTING OFFICE
1916

Figure 14 - Title page, volume 2 of the Post Office Department Inspection Service reference book of known postal criminals, 1916.

MAIL TRAIN ROBBER.



W. E. DIEZ.

Aliases: Eugene Diez, Gene Ford, Eugene Ford, Joe C. Myers, J. S. Allen, W. Eugene Diez, J. C. Myers.

Description.—Age about 24; height 5 feet, 6 inches; weight 118½; medium build; florid complexion; dark red hair; blue eyes.

Peculiar marks, etc.—Both arms freckled. Dim jagged cut scar at 1st joint R. middle finger out. Dim scar in center of R. wrist, out. Round pit scar on cheek L. side bridge of nose. Small round pit scar 1.3 in front of lobe of L. ear.

Bertillon.—67.0; 72.0; 87.0; 18.7; 14.4; 13.0; 5.7; 25.0; 11.5; 8.9; 46.7.

Indicted July 7, 1916, at Elkins, W. Va., and arrested July 18, 1916, Denver, Colo., for robbery of Grafton & Cincinnati R. P. O., train No. 1, at Central Station, W. Va., October 8, 1915, and the theft of 90 registered packages containing unsigned currency. Awaiting trial. History 29670.

Sentenced *APRIL 3, 1917, Martinsburg, W. Va. to serve 10 years in U.S. Pen. Atlanta, Ga.*

Released from penitentiary in Atlanta, Ga. on expiration of sentence Jan. 3, 1924, and transportation furnished to Hot Springs, Ark.

CB 952

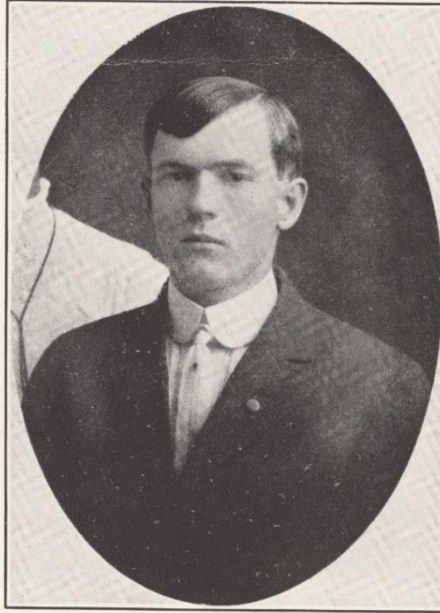
Figure 15 - W. E. Diez; robbed the GRAFTON & CINCINNATI RPO - 1915.

CONFIDENTIAL
PLEASE DO NOT POST

Post Office Department
OFFICE OF THE CHIEF INSPECTOR
Washington

WANTED

\$1,000 REWARD



W. E. Diez. Atlanta

W. E. DIEZ, alias Eugene Diez, alias Gene Ford, is believed to have participated in the hold-up and robbery of Grafton & Cincinnati R. P. O. (B. & O. R. R.) train No. 1, at Central Station, W. Va., October 8, 1915, when ninety packages containing a number of unsigned national-bank bills were taken. Diez probably has in his possession some of the bank bills, which were described in the circular of Mr. Hardy T. Gregory, Post-Office Inspector in Charge, Washington, D. C., copy of which has been furnished to every bank in the country and also to all postmasters at presidential post offices.

DESCRIPTION: Age, 24; height, 5 feet 5 or 6 inches; weight, 123; hair, dark red; complexion, florid; freckled; eyes, dark; good dresser; fond of prostitutes; smokes cigarettes; drinks some; good spender; stops at best hotels.

Under Postmaster General's Notice of Reward, dated June 15, 1915, a reward of \$1,000 is payable for the arrest and conviction of Diez for the above robbery of the mails. Should Diez be seen, his arrest should be caused immediately, and the undersigned or the nearest post-office inspector notified by wire.

J. C. Krous

Chief Inspector.

Washington, D. C., May 27, 1916.

44361°-16

Figure 16 - W. E. Diez; reward poster not in Volume 2, he robbed the GRAFTON & CINCINNATI RPO – 1915.

MAIL TRAIN ROBBER.



HARRY RAINES.

Aliases: Montana Shorty, Arthur Champion.

Description.—Age about 29; height 5' 7"; weight 149; medium build; medium fair complexion; teeth, 2 out; lt. chest. hair; chestnut eyes; sli. rec. chin.

Peculiar marks.—L. arm: Numerous tatoos on arm including bust of sailor, female and anchor below elbow front. R. arm: Numerous tatoos on arm including bust of male, two ball bats, crossed pennants, "Sayre, Pa."; bust of sailor below elbow front. Face: two small scars at 3 to front R. lobe. Ridge of nose broken and bent to right.

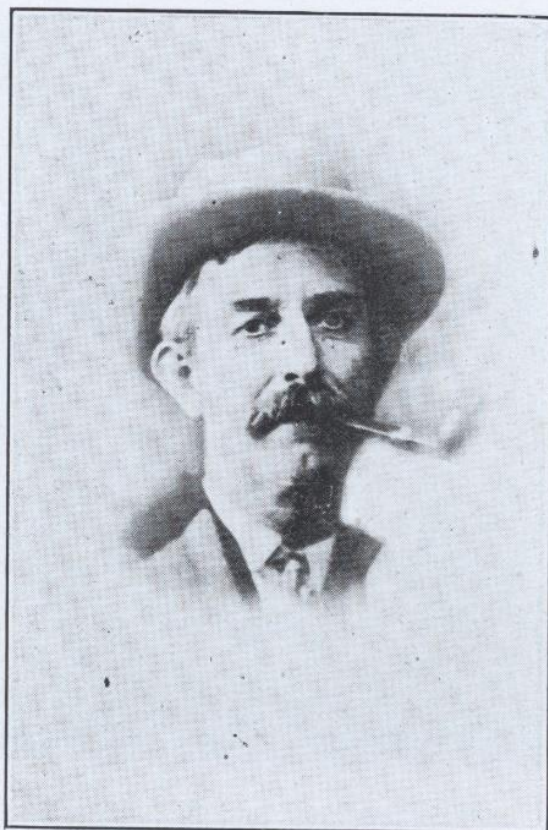
Bertillon.—70.5; 71.5; 94.0; 19.1; 14.9; 13.5; 5.9; 25.8; 11.7; 8.6; 45.1.

Sentenced September 15, 1913, at Birmingham, Ala., to serve a term of five years in the Federal penitentiary, Atlanta, Ga., for robbery of mail car attached to train 4 Nash. & Mont. R. P. O., near Calera, Ala., August 5, 1913. History 23724.

Released 5-26-17, expiration of sentence, & transportation furnished to Sayre, Pa.

Figure 17 - Harry Raines; robbed the NASHVILLE & MONTGOMERY RPO, 1913.

MAIL TRAIN ROBBER.



“FINGERS” BURKE.

Indictment returned April 8, 1913, at Tulsa, Okla., for robbery of the Siloam Springs and Texarkana R. P. O., train 4, near Poteau, Okla., October 4, 1912, pending. Present whereabouts unknown. History 22664.

Figure 18 - "Fingers" Burke; robbed the SILOAM SPRINGS & TEXARKANA RPO, 1912.

MAIL TRAIN ROBBER.



JOHN E. CABLE.

Alias: Ed Wiley.

Description.—Age about 47; height 5 feet 6½ inches; weight 140; medium build; med. ruddy complexion; brown hair; hazel eyes.

Peculiar marks, etc.—I. Ob. sc. bet 2nd & 3d jt 3d finger rear. Vert sc. on 2nd jt. little finger rear. Two long scars on up. arm 6'' abov. elb. out. II. Hor. sc 1½'' long on back of hand. Sc. 1'' long 6'' abov. wrist out. III. Sm pox pits cover entire face. Sc. 4'' long back of head close to hair line. Vert. sc. thru rt. eyebrow, col blue.

Bertillon.—69.2; 76.0; 92.8; 18.7; 15.1; 13.9; 5.9; 25.0; 11.0; 8.3; 45.5.

Sentenced June 13, 1913, McAlester, Okla., to serve a term of 10 years in United States penitentiary, Leavenworth, Kans., for robbery of the Siloam Springs and Texarkana R.P.O., train No. 4, near Poteau, Okla., October 4, 1912.

Previous record.—In 1905, Cable was convicted of highway robbery in Kansas City, Kans., and was sentenced to serve a term of 10 to 21 years in the Kansas State penitentiary. Paroled about 1911. History 22664.

Figure 19 - John E. Cable; robbed the SILOAM SPRINGS & TEXARKANA RPO, 1912.

MAIL TRAIN ROBBER.



HARRY MARKS.

Aliases: James Monroe; Jim Monroe; James Stamper; Jimmie Vann; James E. Clark; Van Clyde.

Description.—Age about 35; height 5 feet 4½ inches; weight 142; medium build; sallow complexion; black hair; brown eyes.

Peculiar marks, etc.—I. Tat. clasped hands with "Friendship" inscribed underneath at 6 above wrist.

Bertillon.—62.8; 66.0; 87.5; 18.6; 14.9; 14.2; 6.6; 25.6; 10.9; 8.1; 44.7.

Sentenced January 6, 1915, Tuscaloosa, Ala., to serve sentence of 25 years in United States penitentiary, Atlanta, Ga., for robbery of Alabama Great Southern train No. 7, Chattanooga & Meridian R.P.O. near Woodstock, Ala., September 25, 1913.

Previous record.—Sentenced September 7, 1912, Huntsville, Ark., by State authorities, to serve three years in penitentiary, Little Rock, Ark., for burglary of First National Bank at Huntsville, Ark., June 14, 1912. Sentenced December 11, 1914, Montgomery, Ala., to serve two years in United States penitentiary, Atlanta, Ga., for carrying explosives on passenger train from State of Georgia to State of Alabama, March 6 and 7, 1914. Marks was taken from United States penitentiary, Atlanta, Ga., on writ of habeas corpus, for trial on the robbery near Woodstock, Ala., and the sentence imposed at Tuscaloosa, Ala., for this offense, begins January 6, 1915, and runs concurrently with sentence he was serving. Indictment returned at Harrison, Ark., by Federal authorities, May 1, 1913, for "larceny of money, postage stamps, and property of United States," June 14, 1912, at Huntsville, Ark., was dismissed April 14, 1915, on motion of the United States attorney, due to the long sentence imposed for the mail train robbery. History 21516.

Advice of 11-23-16 is that the above photo is not that of Harry Marks. Released 8-9-17 on pardon & transportation furnished to Vanceburg, Ky.

Figure 20 - Harry Marks; robbed the CHATTANOOGA & MERIDIAN RPO, 1913.

MAIL TRAIN ROBBER.



HOWARD E. EDWARDS.

Alias: James H. Emery.

Description.—Age about 37; height 5 feet, 4½ inches; weight 113; slim build; fair complexion; light chestnut hair; haz. blue eyes.

Peculiar marks.—Small scar base left thumb. Irreg. cut scar right thumb. Large irreg. cut scar right forehead in hair. Cut scar right side upper lip. Irreg. cut scar right point of chin. Two cut scars back of head. Somewhat deaf.

Bertillon.—63.7; 71.0; 85.6; 18.3; 16.0; 14.6; 6.3; 25.0; 11.2; 8.8; 46.2.

Sentenced October 30, 1912, New Orleans, La., to serve 25 years in United States penitentiary, Atlanta, Ga., for robbery of Montgomery and New Orleans R. P. O., train No. 38, near New Orleans, La., September 4, 1912.

Previous record.—On April 23, 1901, Edwards was convicted at Grove Hill, Ala., for holding up and robbing the proprietor of a store at Jackson, Ala., and sentenced to serve 20 years' imprisonment, being confined in the mines at Pratt City, Ala. He escaped about the year 1903, and it is reported that he has about 18 years of this sentence to serve. History 21674.

Figure 21 - Howard E. Edwards; robbed the MONTGOMERY & NEW ORLEANS RPO, 1912.

MAIL TRAIN ROBBER.



FRANK H. HART.

Alias: B. W. Conrad.

Description.—Age about 31; height 5 ft. 4½ in.; weight 136 to 138; stocky build; light brown hair; gray eyes; fair complexion.

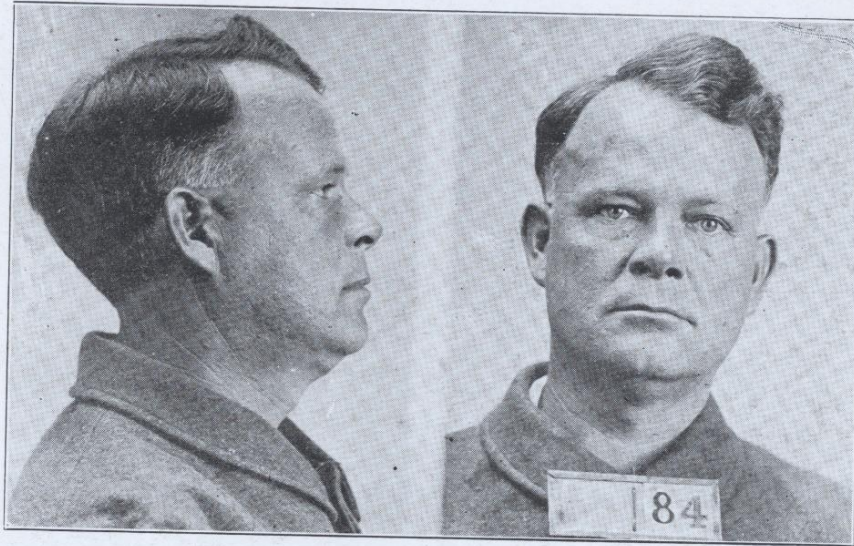
Peculiar marks.—Sc under jt of R elbow, tat green and red ink R forearm. “V” Whitehead torpedo across top of “V”; war vessel in “V” words “Japan 06” over war vessel in “V.” Left arm tat. red, white and blue ink, double star, at point of shoulder. Vac mark left arm under star.

Bertillon.—64.0; ----; ----; 18.8; 14.7; 13.8; 6.3; 24.3; 10.7; 7.9; 44.3.

Sentenced November 29, 1911, at Memphis, Tenn., to serve six years in the Federal penitentiary at Atlanta, Ga., and to pay a fine of the costs in the case, for robbery of St. Louis & Memphis R. P. O. train No. 104 at Memphis, Tenn., the night of June 24, 1911. Released May 1, 1916. History 19836.

Figure 22 - Frank H. Hart; robbed the ST. LOUIS & MEMPHIS RPO, 1911.

MAIL TRAIN ROBBER.



ROBERT LEE TATE.

Alias: E. Smith.

Description.—Age about 43; height 5 feet 9 inches; weight 174; stout build; fair complexion; pale blue eyes.

Peculiar marks.—Vac. sc $\frac{1}{2} \times \frac{1}{2}$ " at $5\frac{1}{2}$ " above left elbow, outer. Vac. sc $\frac{3}{8} \times \frac{3}{8}$ " at $4\frac{1}{2}$ " above left elbow, outer. Mole $2\frac{1}{2}$ " above left elbow rear. Old scar $\frac{1}{2}$ " long at end of left third finger. Mole $3\frac{1}{2}$ " above right elbow outer. Tattoo, "E. Smith" in blue ink $1\frac{1}{4} \times \frac{1}{2}$ " at 3" below right elbow front. Small mole on center right eyebrow. Flesh mole $2\frac{1}{2}$ " above center left eyebrow.

Bertillon.—75.0; 75.0; 93.8; 19.9; 15.2; 13.9; 6.6; 27.5; 11.5; 8.6; 47.7.

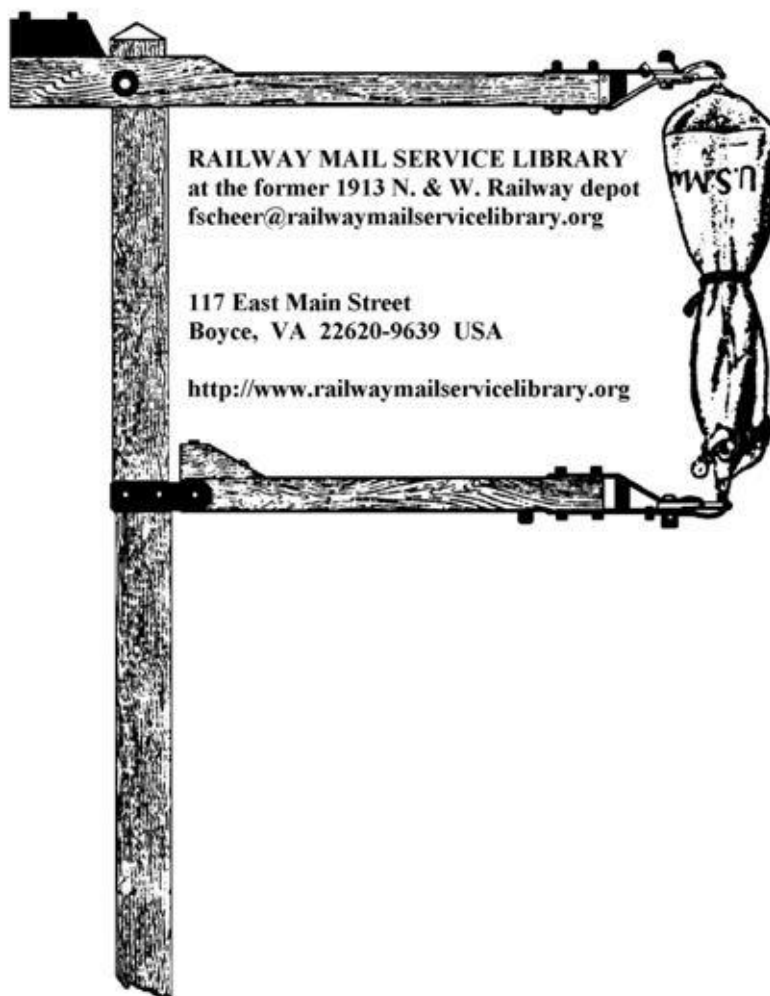
Escaped May 9, 1916, from United States penitentiary, Atlanta, Ga., where he was serving a term for robbery of a mail train of the Siloam Springs & Shreveport R. P. O., near Poteau, Ind. T., June 15, 1899, and present whereabouts unknown. History 29076.

58903-16—32

Advice received in the department to the effect that Tate was re-captured and returned to the Federal penitentiary at Atlanta, Georgia, on August 15, 1916, and discharged from that institution on June 11, 1918, and transportation furnished to South McAlester, Oklahoma, but is reported to have accepted a position in Atlanta, Georgia. C.B.918.

Figure 23 - Robert Lee Tate; robbed the SILOAM SPRINGS & SHREVEPORT RPO, 1899.

RAILWAY MAIL SERVICE LIBRARY FOUNDATION



The Railway Mail Service Library Foundation (RMSLF) was chartered on March 3, 2017, organized as a non-profit Virginia corporation for stewardship, preservation, and post office history research of the Railway Mail Service Library collection at Boyce, Virginia.

The chief focus during 2020 will be developing a strong, capable membership base. Those who welcome leadership roles can be nominated by members to the Board of Directors. Officer positions will be filled from the Directors. Officer positions will be filled from the Directors. Elections to the Board of Directors will be made during the fourth membership meeting during November 2020.

Annual membership dues are \$10, payable to the **RAILWAY MAIL SERVICE LIBRARY FOUNDATION**. Life membership is available for \$250. Members and volunteers will initially

support collection sorting, filing, and document conservation. The longer term vision is for the RMSLF to construct and maintain a new building for the collection through a gift from Paul Nagle, a former Railway Mail Clerk who became President of the National Postal Transport Association.

Come join us! Please write to:

RAILWAY MAIL SERVICE LIBRARY FOUNDATION

rmslf@railwaymailservicelibrary.org

117 EAST MAIN STREET

BOYCE VA 22620-9639

AN OVERVIEW OF THE RAILWAY MAIL SERVICE LIBRARY

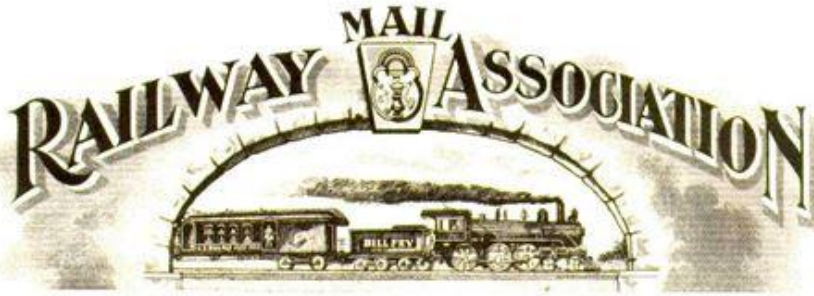
The Railway Mail Service (RMS) Library is major collection of materials pertaining to en route distribution history. It can assist researchers interested in route agent, Seapost, railway, and highway post office (RPO and HPO) history. The collection has many unique, original-source documents that provide answers to questions dealing with the transportation and distribution of USA Mail between 1862 and 1977, as well as other countries during the 19th and 20th centuries.

The R.M.S. Library has grown from the AmeRPO ("American RPO") Society Library established in the early 1950s by Bryant Alden Long, co-author of the superb book on the subject, **MAIL BY RAIL**. After a period of stagnation it was acquired by Hershel Rankin, who renamed it the R.M.S. Library. When he was 80 years old and no longer to handle research requests, Dr. Frank R. Scheer purchased the collection. Over a two-year period, the collection was moved from Florida to Virginia and renamed the "Railway Mail Service Library." Since 1982, several major additions have been made to the collection. These include the Edwin Bergman scheme and schedule collection, Lloyd Jackson's, John Kay's, Lawrence Kruse's, Anne and Ed Maloney's, and Roy Schmidt's postal artifacts, Carm Cosentino's Transfer Office covers, Charles Scott's Fifth Division RMS records, worldwide postal emblems assembled by Len Cohen, James Mundy's postal locks, Lt. Col (ret) A. B. "Chip" Komoroske's railroad books, H. W. "Red" Reed's post office route maps, John McClelland's 1905 to 1949 bound issues of **THE RAILWAY POST OFFICE**, as well as Paul Nagle's set of the **POSTAL TRANSPORT JOURNAL** between 1950 and 1959. The important Kenneth Wilson - American Postal Workers Accident Benefit Association Collection was received during January 2016, documenting the early history of the Railway Mail Accident Benefit Association that was established in 1891, as well as the Women's Auxiliary of the Railway Mail Association. A multitude of other historically-significant resources have been acquired from many former railway and highway postal clerks.

As with most archival libraries, the principal activities are assisting research inquiries, organizing and filing the collection, as well as preservation of materials. The Railway Mail Service Library Foundation will erect a new Paul Nagle Center for the collection with funding from Mr. Nagle who served as President - National Postal Transport Association. In addition to a secure, climate-controlled library facility, a garage is planned for housing a 1967 Highway Post Office as well as a 1930 Ford Model A mail truck.

These historical materials and artifacts are held by the Railway Mail Service Library Trust. The trust has a loan agreement with the Railway Mail Service Library Foundation for volunteer support in managing the collection and supporting post office history research requests. Inquiries pertaining to RMS Library holdings or persons seeking research assistance should contact the:

RAILWAY MAIL SERVICE LIBRARY, INC.
fscheer@railwaymailservicelibrary.org - e-Mail
117 EAST MAIN ST
BOYCE VA 22620-9639 USA



RAILWAY MAIL SERVICE LIBRARY FOUNDATION
POSTAL HISTORY RESEARCH - ARTIFACTS PRESERVATION

www.railwaymailservicelibrary.org
(540) 837-9090 - TELEPHONE
(571) 379-3409 - TEXT MESSAGE
rmslf@railwaymailservicelibrary.org - e-MAIL
117 EAST MAIN STREET
BOYCE VA 22620-9639

MEMBERSHIP APPLICATION

Your membership in the Railway Mail Service Library Foundation will support stewardship, preservation, and post office history research of the Railway Mail Service Library collection. Annual dues are \$10 and a life membership is \$250. Please provide the information below for the membership roster:

First, Middle Initial, Last Name: _____

Mailing Address: _____

City, State, Postal Code, Country: _____

Telephone Number: _____

eMail Address: _____

Donations are also invited. The Railway Mail Service Library Foundation is a 501(c)(3) public charity and donations or contributions are tax deductible as provided for and to the extent provided by law. Please check this box if your employer will match your donation: ☐ If the employer requires an invoice, please provide contact information.

Thank you very much for your interest. If you have questions, please call or write.

Sincerely yours,

Frank R. Scheer, Secretary-Treasurer

RMSLF EIN: 37-1852514
A 501(c)(3) Non-Profit Virginia Corporation